



To conserve and protect shoreline, wetlands, beaches, freshwater habitats, fields & forests, and to ensure that access to these places, both on Kingsburg Peninsula and in neighbouring areas, remains available to the public forever.

An Occasional Newsletter

Fall | Winter 2012

West Ironbound Island Fundraising Update

The project to preserve and protect the entirety of West Ironbound Island is well on-track to reaching a successful conclusion early in 2013!
Page 1

Land and Land-related Donations

This year, the KCC has received three very significant land-related donations.
Page 2
Donation & Membership forms
Pages 6-7

Give a gift back to nature!

Your donation will help to protect our local environment, maintain our beloved walking trails, and educate all about the natural wonders of our area.
Page 3

Earth Day Clean-up

Cleaning up for all to enjoy.

Gaff Point Work Day

Making hiking Gaff Point more accessible.

Membership Drive

We have 160 new members!
Page 4

The S.S. Mount Temple and a New Land Acquisition

The Mount Temple drama on West Ironbound Island. And, a new land acquisition in Lower Lahave.
Page 5

Happy Holidays & thank you for a terrific 2012!

As 2012 ticks down to its final days and we look ahead to the new year of 2013, the board of the KCC wishes to thank you all for your support over the course of the year! 2012 has proven to be seminal in the seventeen year history of the KCC, and we want to share with you some of the significant highlights.

West Ironbound Island

Since July 2010, when the KCC purchased the first half of the island, our top priority has been to bring the other half into our protection.

Through the commitment of the owner of the other half of the island, the substantial financial contributions of well over 140 individuals, the on-going work, talents, and support of numerous KCC volunteers, the stunning \$100,000 gift of support in June from the Sitka Foundation of British Columbia, and the commitment of Nova Scotia's Department of Natural Resources to partner with us in concluding this project, we are quite optimistic that in a very few months we will be able to publicly announce that the entirety of West Ironbound Island will be protected forever!

Be on the look-out for a celebratory email from us in the first quarter of 2013!



A spectacular view from atop a cliff on West Ironbound

Land & Land-related Donations

This year, there were three very significant land-related donations to the KCC and, by extension, to the people of Kingsburg and Nova Scotia. These donations will enhance the preservation and public access to lands in the Kingsburg area and provide an opportunity for the KCC to partner with other owners in the protection of these lands.

Ahrens Donation

In May, departing Kingsburg residents Fred and Victoria Ahrens very generously donated their interest in the Common Lands known as the Ochwald, an six-acre area of land between Drei Spitz Pond and Hartling Bay.

This gift was their way of saying thank you for their wonderful experiences during the years they called Kingsburg their second home.

Thanks Fred and Victoria!

Channels/Galbraith Donation



Don and Noreen's gift of land

In September, long-time Kingsburg residents and KCC members Noreen Channels and Don Galbraith donated the lands just across from their home in Kingsburg. The lands are comprised of two connecting waterfront lots bordering on Kingsburg Pond and are adjacent to two other parcels of land already owned by the KCC. One of those two

lots was purchased by the KCC in 2008; the second was donated in 2009 by Gillian and Hazen Trueman. All of these lands sit at the juncture of Kingsburg Road and Hirtles Beach Road and together work to enhance pond access and preserve the iconic view of the village of Kingsburg and the Atlantic beyond.



The Ochwald with Hell Point in the background

Knock Donation

In October, former Kingsburg residents James and Christine Knock donated their interest in the Common Lands of Kingsburg to the KCC. This donation provides the KCC with another undivided share in the Ochwald and an undivided share in the half-acre lot in Kingsburg Village that is currently an access point to Kingsburg Beach. As well, the donation includes an undivided share in each of two large properties located above the village.

Give a gift back to nature!

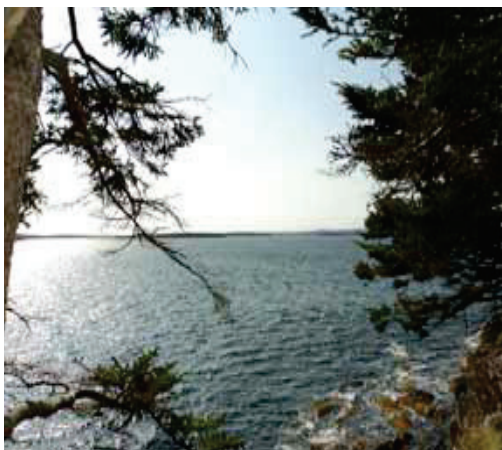
Please make an end-of-year donation to the KCC

You are probably one of the thousands of people every year who enjoy access to land throughout the Kingsburg peninsula because of the work of the Kingsburg Coastal Conservancy. It is supporters like you that make our efforts successful.

With your help, the KCC protects, and provides access to, some of the most beautiful land in Nova Scotia – the hiking trails on Gaff Point, the sands of Kingsburg Beach, windswept West Ironbound Island, Sand Dollar Beach – these are only a few of the close to 288 acres that the KCC owns, shares or stewards on the Kingsburg Peninsula.

We are entirely a volunteer-run organization. Your donation will help to protect our Kingsburg environment, maintain our beloved walking trails, and educate all about the natural wonders of our area.

So as we approach the year-end season of giving, may we ask you to consider helping us grow the momentum for land conservation and access by making a generous tax-deductible gift of \$25, \$35, or more by December 31?



View of LaHave Islands from Gaff Point



Viewing Gaff Point from behind the rock dune on Hirtles Beach

Options for donating

Give online or through the mail: You can either mail your donation to the KCC or go online and use CanadaHelps.

Direct your donation: The donation form at the end of the newsletter offers a number of options to direct your donation to a specific KCC program or activity.

Land or securities: If you are interested in donating securities or land, please contact us.

Legacy giving: For information about naming the KCC as a beneficiary in your will or a life insurance policy, please contact us.

Tax receipts: The KCC is a registered charity, and will send you a Canadian tax receipt for the complete amount of your donation and/or membership dues. US tax receipts for donations of money or securities are possible but please first contact us for information on the process.

Gift donations: If you wish to make a gift donation, to celebrate a special occasion, or make a donation in memory of someone, please note this on the donation form. The KCC will send a card to the individual and a tax receipt to you.

KCC Earth Day Beach Clean-up

Back in April, the KCC, partnering with the Municipality of Lunenburg, sponsored an Earth Day-related clean-up of the three-kilometre-long Hirtles Beach, as well as the neighboring ponds' shorelines. About a dozen hearty souls braved the cool morning fog to prepare the beach and ponds for the spring and summer!



Marilyn Congdon, a KCC Board member, at the end of the beach clean-up



Gaff Point walking trail



Gaff Point Work Day

In early July, the KCC partnered with the Nature Conservancy of Canada and a number of community volunteers to improve the hiking trail on Gaff Point. Particular attention was given to those areas which were consistently wet and muddy. This day of work led specifically to the creation of a simple board walk bridge over a portion of the path and in general to the development of a more accessible trail for the many walkers and hikers who cherish this popular destination.

Membership Drive

Last Spring we started a membership program in order for folks to more easily participate in the Association. The response was wonderful, with close to 160 of you becoming members. Through this year's campaign we were able to bring more structure to our environmental organization by rebuilding our core membership, revisiting the structure of our association, and, at the same time,

defining our short-term and one-, two- and three-year goals.

If you would like part of your donation to be a membership please indicate on the donation form or contact us directly.

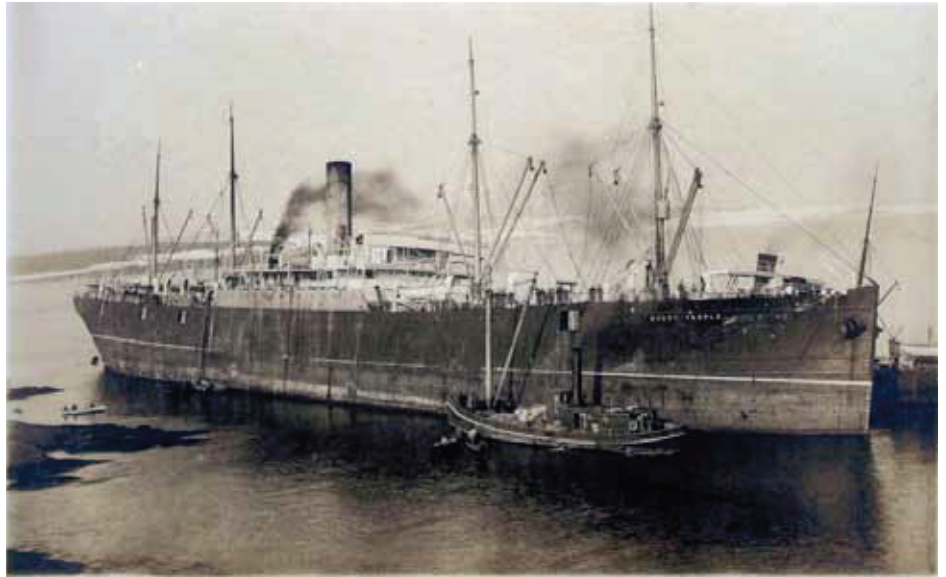
Membership rates: Individual annual memberships are \$30, and a family is \$45. A separate form is included in the newsletter.

Renewal: If you are currently a member, perhaps this would be a good opportunity to renew. Your renewal will be dated to commence at the expiration of your 2012 membership.

With a newly vibrant membership and volunteer base, we are making significant strides which will lead to further land protection, stewardship, and public access.

Ralph Getson on the S.S. Mount Temple and West Ironbound Island

At our annual summer potluck dinner in August, Ralph Getson of the Fisheries Museum of the Atlantic, our guest speaker, made an informative and fascinating presentation about the 1907 grounding of the Mount Temple off West Ironbound Island, the history of the wreckage and its removal, and some of the colourful folklore surrounding its cargo and artifacts. For the approximately fifty people in attendance at the potluck, it was a memorable evening which underscored a unique aspect of West Ironbound Island and Nova Scotia's history.



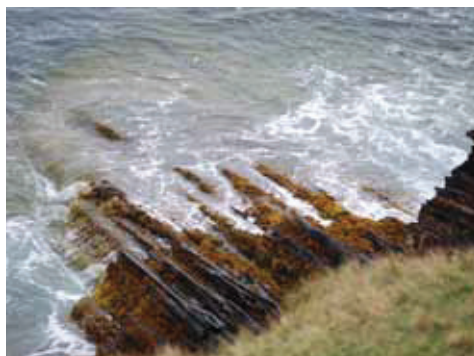
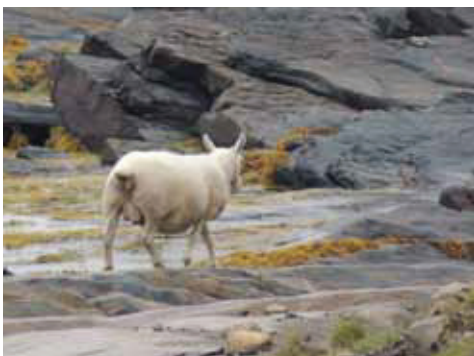
The S.S. Mount Temple aground on the shore of West Ironbound Island

Land Acquisitions

In the late spring of this year, the KCC also acquired new land in Lower Lahave. This 11-acre wooded waterfront parcel is the most recent addition to the KCC lands in the Lower Lahave/Shoubach region. It is the KCC's hope to eventually develop a hiking trail in this still pristine area.



Thank you again for all your support in 2012! We look forward to an equally exciting 2013 as we celebrate the preservation of West Ironbound Island, develop stewardship of our recently acquired and existing lands, look more closely at the Shoubach/Lower Lahave region, and expand public access to our area.





Please donate to the KCC

1

I would like
to donate

\$

**Please check the appropriate box,
if you wish to direct your donation:**

- General Operations
- West Ironbound Fundraising Campaign
- Trail Development and Maintenance
- New Properties Acquisition
- Endowment Fund
- Beach Hill Commons
- The KCC will choose

2

Contact Information

Name _____

Address _____

Email _____ Phone _____

- This is a gift for the person named below.
We will send them a card informing them of your gift.
(Please include their name, address, and email)

3

Please print and complete this form and mail it with a cheque to:

Kingsburg Coastal Conservancy
Box 1A-1, Rose Bay, NS
B0J 2X0

OR, go to www.kccns.org and click on the CanadaHelps logo to donate.

4

We will send you a tax receipt.

17 Years of Protecting Coastal Lands



Become a member of the KCC

1

Please select a level of membership (we will provide a tax receipt)

- \$15 (Student)
- \$30 (Individual)
- \$45 (Family)
- \$250 (Friend)
- \$1,000 (Benefactor)
- \$1,000 (Corporate)
- Other Amount \$ _____

2

Contact Information

Name _____

Mailing address _____

Telephone _____

Email _____

- This is a gift for the person named above.
My name, address, phone number and email is:

3

**Please print and complete this form
and mail it with a cheque to:**

Kingsburg Coastal Conservancy
Box 1A-1, Rose Bay, NS
B0J 2X0

OR, go to www.kccns.org and click on the CanadaHelps logo to become a member.

17 Years of Protecting Coastal Lands